

An artist's impression of a modern, multi-story building with a curved, white facade and a glass railing. The building features a large, open-air terrace on the upper floor with a person sitting on a lounge chair. The building is situated in a dense urban environment with many high-rise apartment buildings in the background. The sky is blue with some clouds. The text "Skyline 360°" is written in a large, elegant, cursive font, and "at St Thomas Walk" is written in a smaller, sans-serif font below it.

Skyline 360°

at St Thomas Walk





Artist Impression

ADDRESS : 68 St. Thomas Walk

DEVELOPER : Hiap Hoe Group

TENURE : Freehold

PLOT AREA : 44,004 sqft

NO. OF TOWER : 1

NO. OF STOREYS : 36

TOTAL NO. OF UNITS : 61

TOTAL NO. OF CARPARK : 73

UNIT TYPES:

3 bedroom - 1733 sq ft, 27 units

4 bedroom - 2131 sq ft, 27 units

Penthouse - 3929 to 6523 sq ft , 7 units

EXPECTED TOP : 30th June 2013

EXPECTED LEGAL COMPLETION : 30th June 2016



Unique Selling Points

PRIME LOCATION

- Short stroll to Somerset MRT station and Orchard Road's shopping, dining and entertainment belt
- A stone throw to The Central Business District and Financial Centers
- Well facilitated by major expressways (CTE & PIE)

DEVELOPMENT HIGHLIGHTS

- Freehold development in prime district 9
- 61 LUXURIOUS UNITS with private lift & lobby with direct access to balcony.
- Natural marble flooring, timber strips for bedroom and full height, wide sliding window/door panels.
- Stunning views of Orchard, Istana, Marina Bay, IR, Flyer.
- Designed to provide maximum visual impact. Each unit comes with more than 270° view of the city.

Affluent living space • Beautiful views • Abundant natural light and breeze



Artist Impression



Indulgent touches of sophistication

The luxurious Skyline 360° interior is adorned with an international line-up of exquisite brand names reflecting your elegance, lifestyle and class.



No effort has been spared in adorning your residence with the finest names in contemporary fittings and finishes. From stylish light switches in every room to designer sanitary tap fittings and wares and high quality appliances, there is a notable sense of privilege living at every turn.



blum
Perfecting motion

bticino

GAGGENAU

GIRA

Vitra
Istanbul by Covegrove.





Artist Impression

SURROUND YOURSELF

with pleasurable facilities



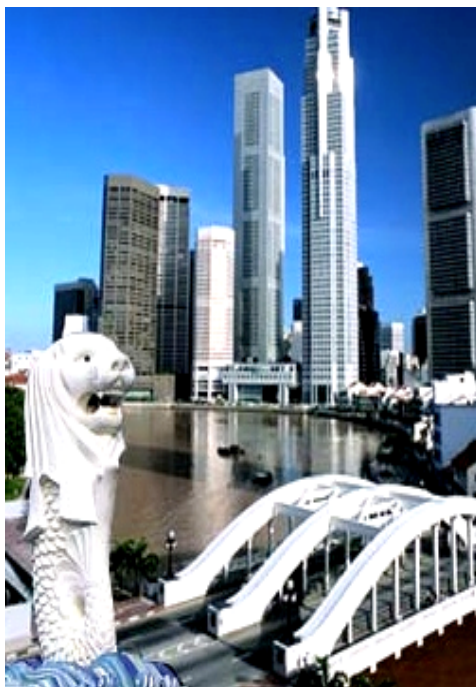
You deserve a vibrant hideaway to call your own.

Let Skyline 360° be yours.

Choose to take part in a myriad of indoor/outdoor pursuits. Indulge in a pleasant workout at the gymnasium. Dine alfresco and socialise with friends and relatives at the clubhouse, entertainment deck and barbecue pavilion.



Simply lie back and take in the tranquility of the lush landscaping and water features. Immerse in a calming holistic existence. Recline in a sun lounger with a good book at the sun fanning pool deck. Drive right in at the lap pool. Find peace of mind at the soothing steam room, hot tub and hydrotherapy pool.



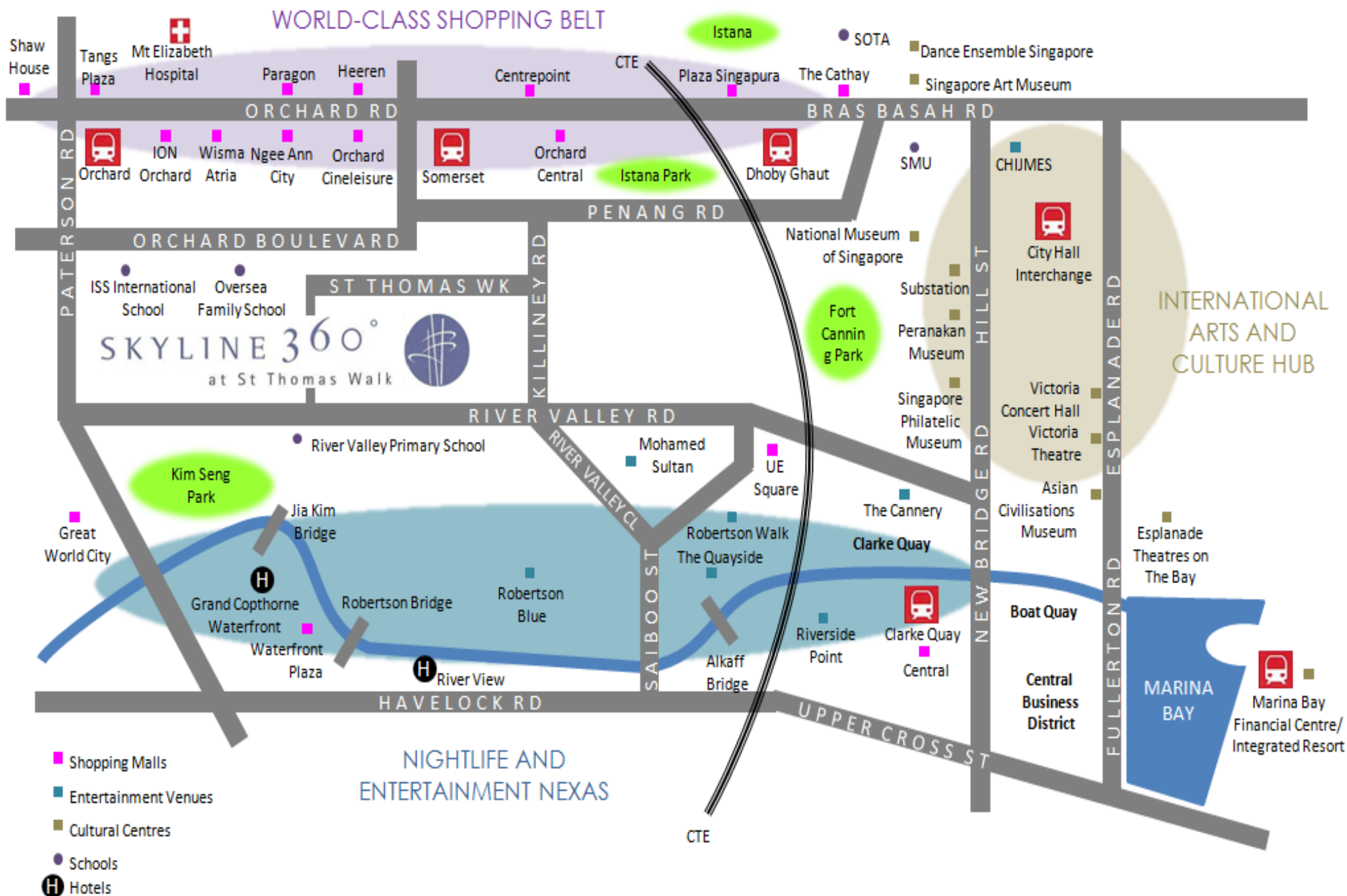
the first stop of world travellers are
AT YOUR DOORSTEPS

Live where visitors from all corners of the world enjoy the best of Singapore's premier retail, dining, entertainment and cultural experiences.

Families will appreciate the proximity of the various prestigious School. The Central Business District and financial centres are also conveniently right around the corner.

Amenities

TRANSPORT	DISTANCE (BY CAR)
Somerset MRT Station NS23	0.97 km
Orchard MRT Station NS22	1.37 km
Dhoby Ghaut Interchange MRT Station NE6	1.53 km
Clarke Quay MRT Station NE5	1.97 km
Tiong Bahru MRT Station EW17	2.06 km
SHOPPING, DINING, ENTERTAINMENT AND MEDICAL FACILITIES	DISTANCE (BY CAR)
Cathay Cineleisure Orchard	0.96 km
313 @ Somerset	0.98 km
Great World City	1.06 km
Orchard Central	1.06 km
Ngee Ann City	1.11 km
Takashimaya	1.11 km
SCHOOL AND INSTITUTIONS	DISTANCE (BY CAR)
River Valley Primary School	0.82 km
ERC Institute	0.84 km
East Asia School of Business	1.11 km
Chatsworth International School	1.13 km
Oversea Family School	1.17 km
Raffles Academy	1.31 km
Saint Margaret's Primary School	1.83 km
Anglo-Chinese School (Junior)	1.91 km
RECREATION	DISTANCE (BY CAR)
Youth Park	0.84 km
National university of Singapore Society	0.96 km
Kim Seng Park	0.97 km



LEGEND

- A

Pedestrian Entrance
- B

Guard House
- C

Side Gate
- D

Arrival Plaza
- E

Hot Tub
- F

Sun Tanning Pool Deck
- G

Lap Pool
- H

Splash Pool
- I

Hydrotherapy Pool
- J

Aqua Gym
- K

Water Feature
- L

Children's Playground
- M

Barbecue and Outdoor Dining Pavilion
- N

Club Facilities (Mid-Basement Level)
- O

i) Gymnasium

ii) Female Changing Room with Steam Room

iii) Male Changing Room with Steam Room
- P

Clubhouse - Multi Purpose Room with Kitchenette
- Q

Basement Carpark Entrance
- R

Biological Pond
- S

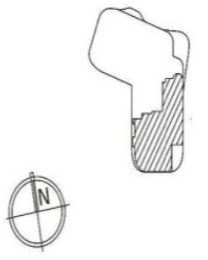
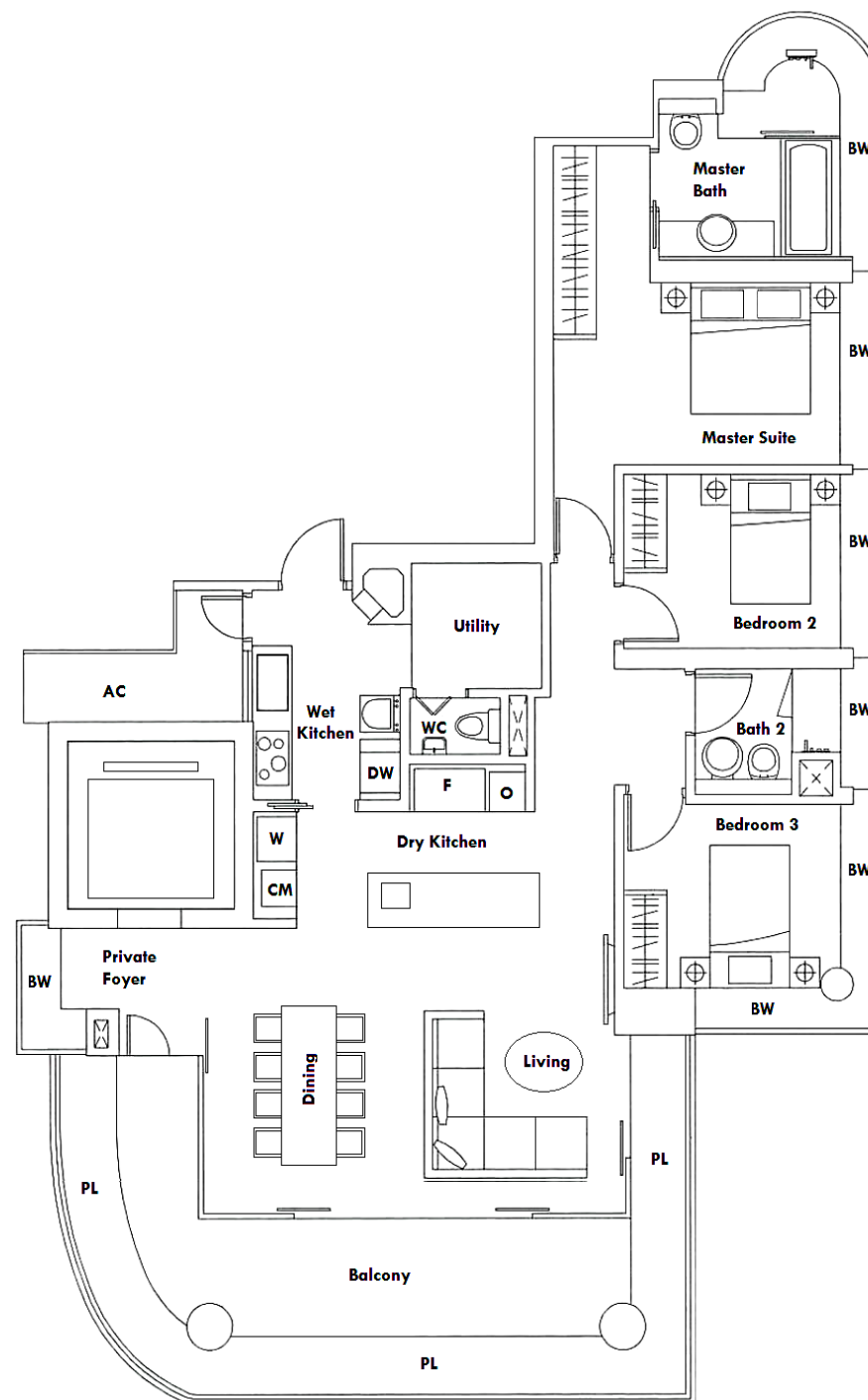
Management Office (Basement)
- T

Water Cascade



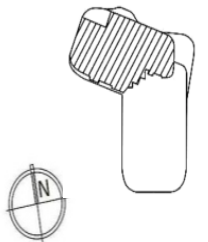
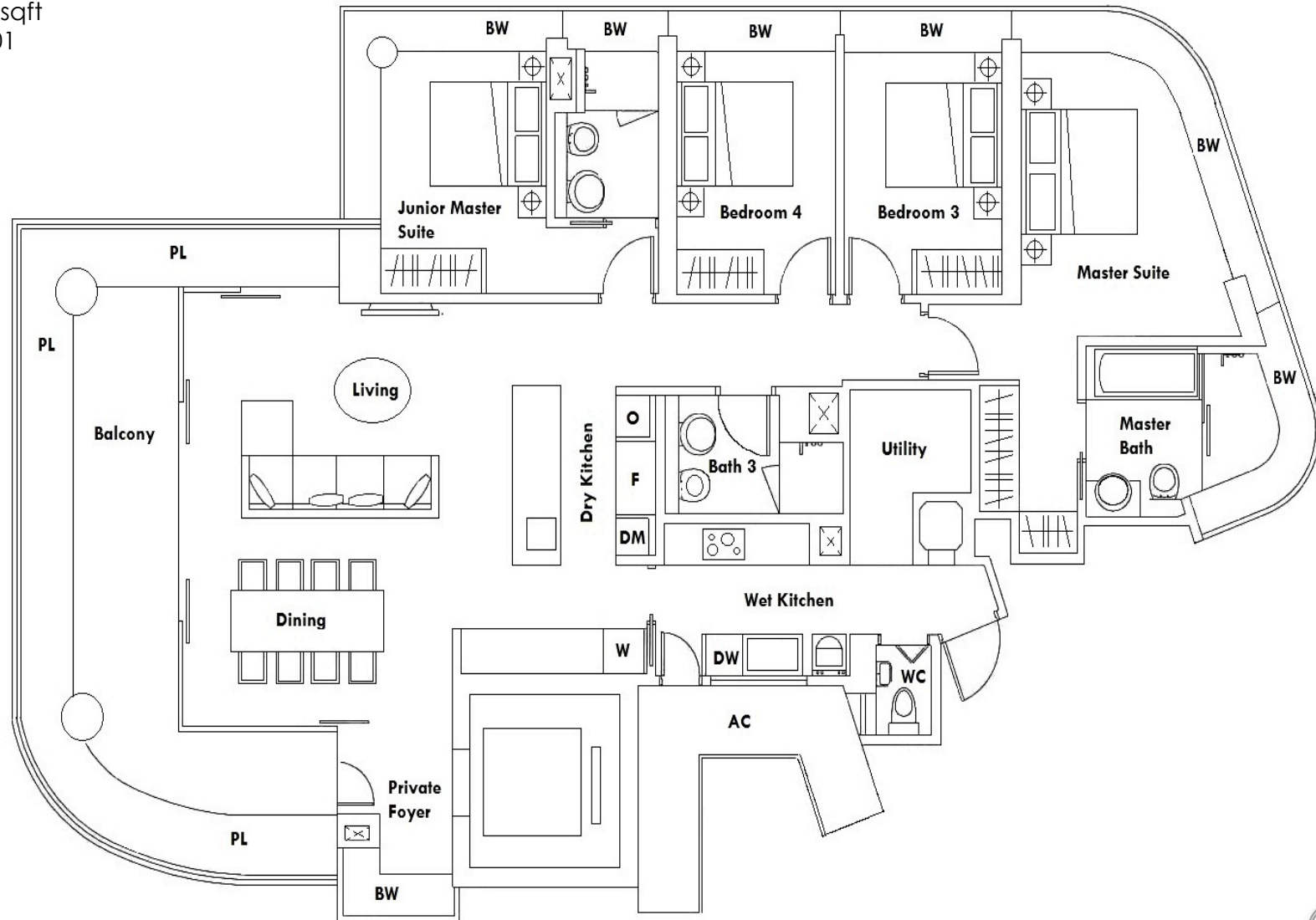
TYPE A

3 Bedroom
161 sqm / 1733 sqft
#03-02 to #29-02



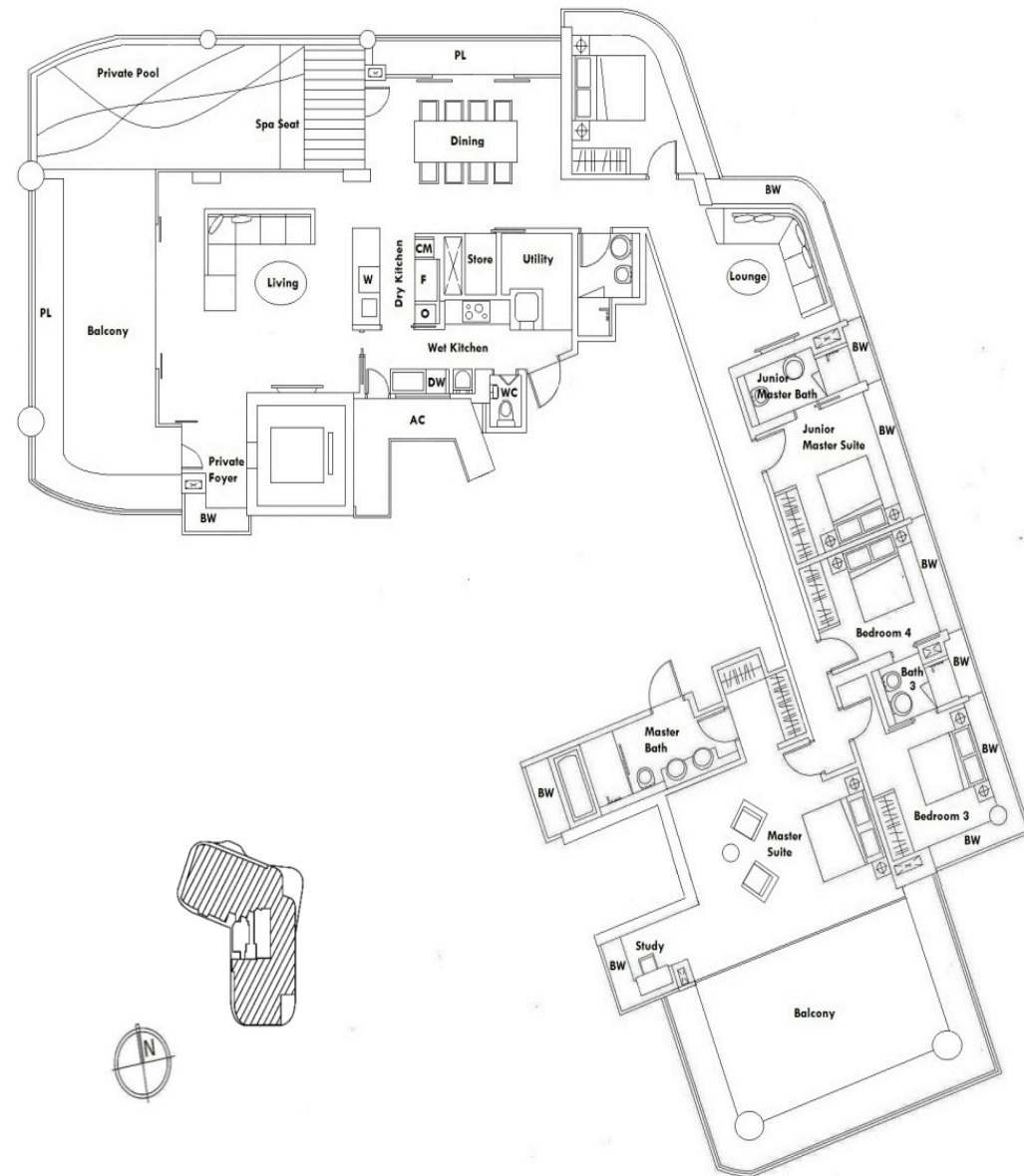
TYPE B

4 Bedroom
198 sqm / 2131 sqft
#03-01 to #29-01



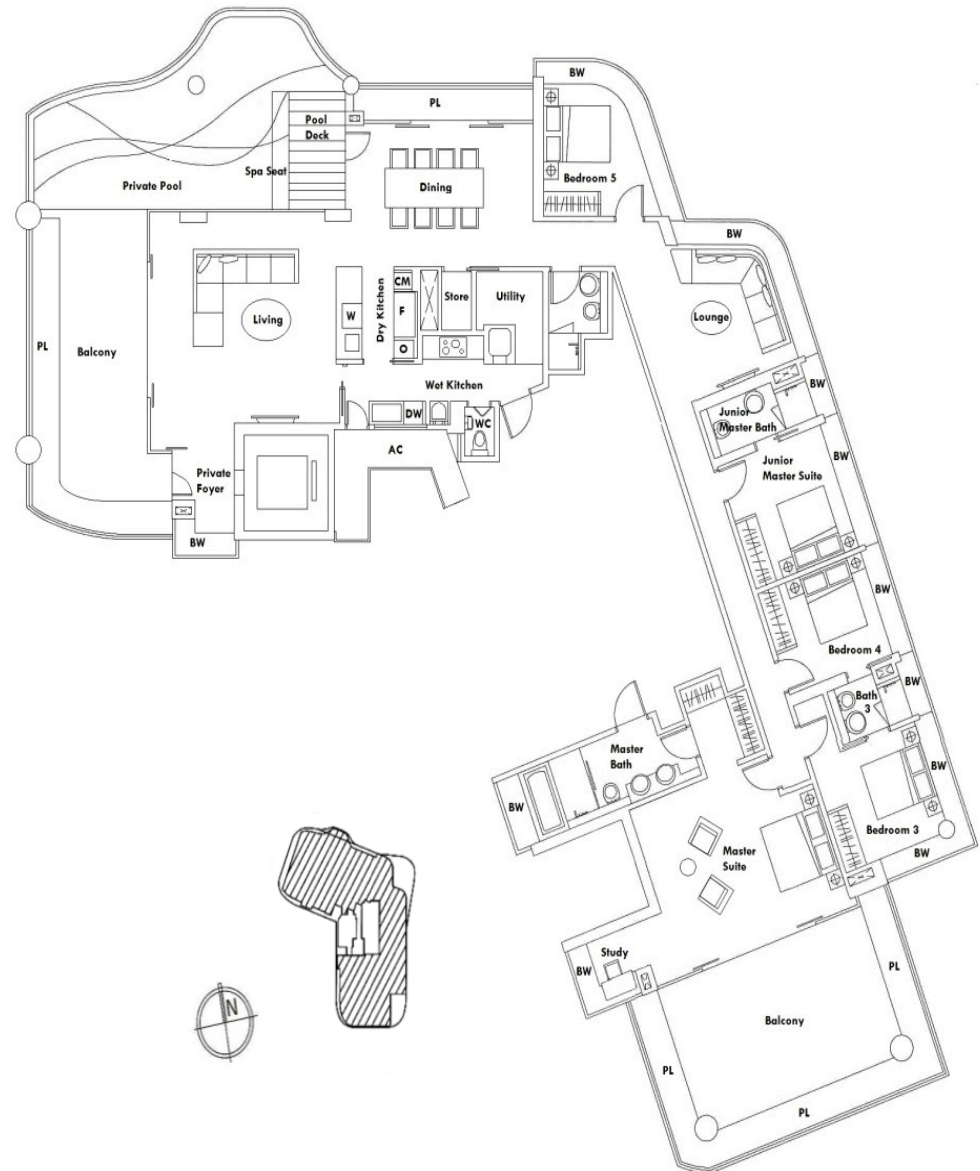
TYPE C

Penthouse
365 sqm / 3929 sqft
#30-01 to #34-01



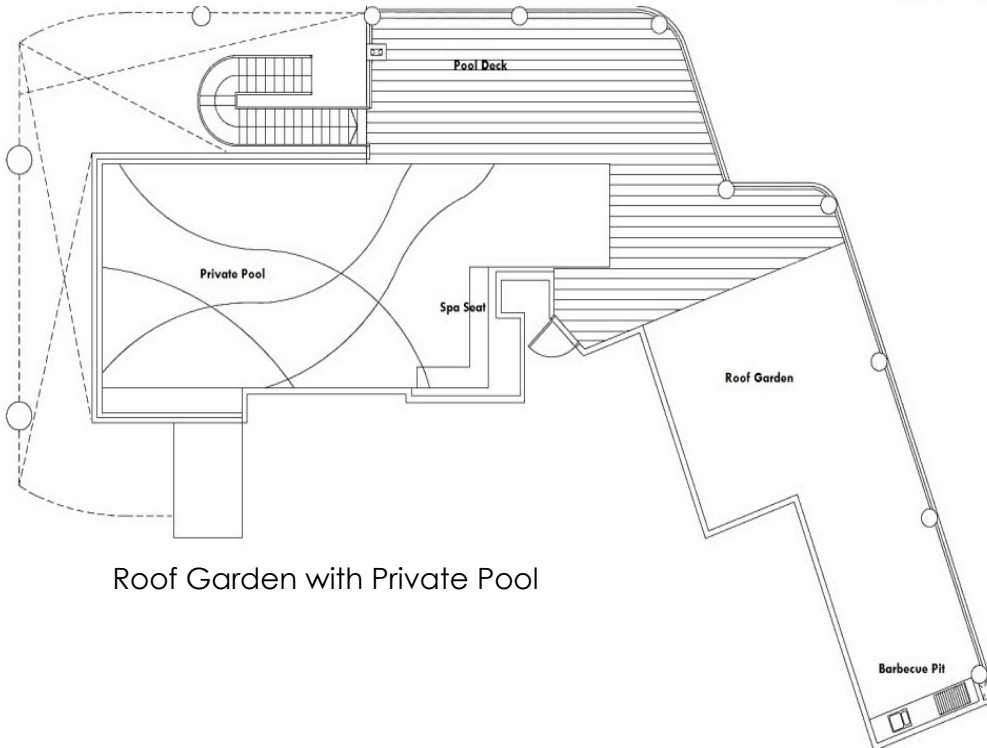
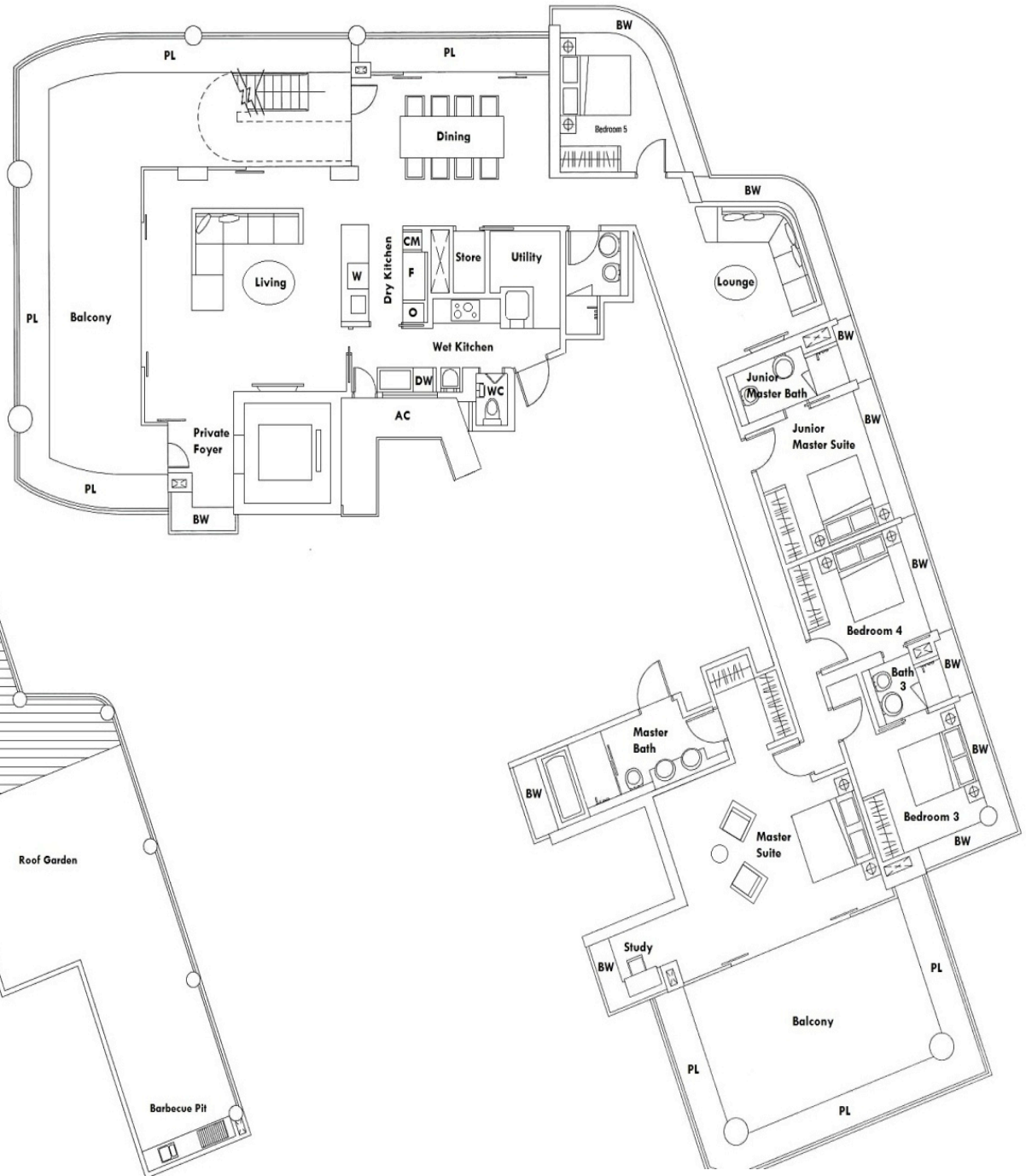
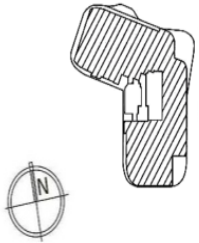
TYPE D

Penthouse
373 sqm / 4015 sqft
#35-01



TYPE E

Super Penthouse
606 sqm / 6523 sqft
#36-01



Roof Garden with Private Pool

SIGNATURE HOMES
by **HiapHoe**
www.hiaphoe.com

Developer



Marketing Agent

SLP
SCOTIA
(Licence : L3010547H)

Disclaimer:

Whilst every care has been taken in preparing these particulars, M/s SLP Scotia Pte Ltd and the vendors give no warranty as to the accuracy of the information contained and potential purchasers should satisfy themselves as to their accuracy. The information contained herein does not form part of the offer or contract. All information printed in this property brief are subject to changes without prior notice.